

The Organisation

Kimberly Clark EMEA

40 London Road, Reigate, Surrey, RH2 9QP, UK



has been assessed and its products certified as meeting the requirements of

Chain-of-Custody

The company was assessed against the following standards:

FSC-STD-40-004 V2-1 Standard for COC Certification – October 2011

FSC-STD-40-005 V2-1 Company Evaluation of Controlled Wood – April 2007

FSC-STD-40-007 V2 Sourcing reclaimed materials – April 2011

FSC-STD-40-003 V2-1 Chain of Custody Certification of Multiple Sites – November 2014

for the products detailed in the scope below

This certificate is valid from 26 September 2016 until 25 September 2021

Issue 13. Certified since October 2007

SGS Ref # GB08/74777

This is a multi site scheme

Additional site details are listed on the subsequent page

Authorised by

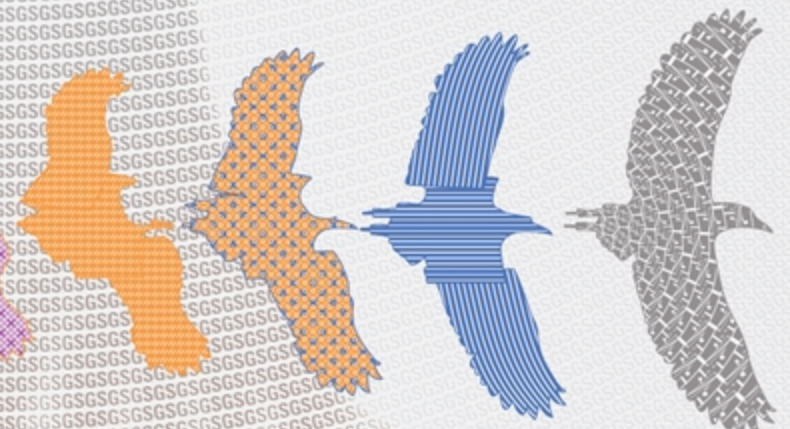
SGS Société Générale de Surveillance SA - Certification and Business Enhancement
Technoparkstrasse 1 8005 Zurich Switzerland
t +41 (0)44 445-16-80 f +41 (0)44 445-16-88 www.sgs.com



The mark of responsible forestry

Accredited FSC-ACC-037

The validity of this certificate shall be verified on <http://info.fsc.org>
For the full list of product groups covered by the certificate see <http://info.fsc.org>
This certificate itself does not constitute evidence that a particular product supplied by the certificate holder is FSC-certified (or FSC Controlled Wood).
Products offered, shipped or sold by the certificate holder can only be considered covered by the scope of this certificate when the required FSC claim is clearly stated on invoices and shipping documents.
This certificate remains the property of SGS and shall be returned upon request.



Kimberly Clark EMEA Chain-of-Custody



Issue 13

Detailed scope

The purchase of FSC 100%, FSC Mix, FSC Recycled and FSC Controlled Wood pulps and tissue, and pre- and post-consumer reclaimed materials, for the production and sale of FSC Mix and FSC Recycled tissue and tissue products, using the Credit, Percentage and Transfer Systems, with the outsourcing of some tissue conversion.

Additional facilities

- Rouen, Boulevard Industriel, 8 Rue Antoine Lavoisier, Sotheville-les-Rouen 76300, France**
- Villey-Saint-Etienne, ZAC Villey-Saint-Etienne, Toul, Cedex 54212, France**
- Romagnano, Regione San Martino 16, Romagnano Sesia 28078, Italy**
- Salamanca, Ctra de Florida de Liebana, Km. 3.8, Dominos, Salamanca 37120, Spain**
- Barrow, Park Road, Barrow-in-Furness, Cumbria, LA14 4QX, UK**
- Flint, Aber Road, Flint, Flintshire, CH6 5EX, UK**
- Northfleet, Crete Hall Road, Northfleet, Kent, DA11 9AD, UK**
- Niederbipp, Rotboden 1, Postfach, Niederbipp 4704, Switzerland**
- Koblenz, Kimberley-Clark GmbH, Werk Koblenz, Postfach 200865, 56008, Germany**
- Jaromer Mill, Dolecka 111, Jaromer, 55101, Czech Republic**



The mark of responsible forestry

Accredited FSC-ACC-037